

19/12

NZZC

Tauranga Aerodrome — Airshow and Restricted Area NZR286
Effective: 28 to 29 JAN 12

SPORTAVEX 2012 and CLASSICS OF THE SKY will be held at Tauranga AD during the period 27 to 29 JAN 12. This event is being hosted by the Sport Aircraft Association (NZ), Inc. Extensive light aircraft, helicopter and microlight activity, including NORDO traffic will take place within the circuit and surrounding area.

Airshows will be held on SAT 28 JAN 12, 1100 TO 1500 NZDT, **and** SUN 29 JAN 12, 1000 to 1630 NZDT.

Airspace

Tauranga CTR/D and Rotorua CTA/D will be operative as per notified hours of service. Check AIP SUP 2/12 and NOTAM.

Frequencies

Aerodrome Control: Tauranga TOWER: 118.3 MHz

VFR Ground Movements: Tauranga GROUND: 123.4 MHz

ATIS: 126.6 MHz

Temporary restricted area NZR286 is prescribed to facilitate the safety of air navigation during the Tauranga City Airshow as follows:

NZR286 Tauranga, Bay of Plenty

All that airspace laterally designated as NZA256 (Tauranga CTR/D).

Upper limit: 9500ft AMSL.

Lower limit: Surface.

Activity: Active between 1201272200 and 1201280200 (1100 and 1500, 28 JAN 12 NZDT), **and** between 1201282100 and 1201290330 (1000 and 1630, 29 JAN 12 NZDT) or as advised by NOTAM; air display.

Administering Authority: Airways Corporation of NZ Ltd; Tauranga Control Tower, Tauranga Control Tower 118.3 MHz, Tel (07) 575 4144.

Airshow Co-ordinator: K Skilling; Tel (07) 571 6100.

Co-Directors: W Sisley; Tel (07) 549 1855 or 027 303 3131,
A Gormlie; Tel (07) 572 4000 or 021 822 205.

Fuel

The Z Energy Avgas 100 facility located west of the TWR will not be available between 1700 NZDT, THU 26 JAN 12 and 0600 NZDT, MON 30 JAN 12. Access to BP Avgas 100 pumps will be limited due congestion.

Jet A1 will be available via AIRFUELS tanker, Tel 021 430 354.

Avgas 100 will be available via tanker on frequency 128.95 MHz "Tauranga Fuel". Payment is by Cash or EFTPOS only.

Airshow

During the airshow (1100 until 1500 NZDT, 28 JAN 12 **and** 1000 until 1630 NZDT, 29 JAN 12, or as advised by NOTAM), NZR286 will be active and this area will be closed to all aircraft except for airshow participants and emergency flights.

Prior approval must be obtained for scheduled passenger transport aircraft to enter NZR286 and land at Tauranga aerodrome, or for departure from Tauranga aerodrome.

All airshow display pilots must attend the briefings which will be held in Hangar 5, Dakota Way 0830 NZDT, SAT 28 JAN 12 and 0830 NZDT, SUN 29 JAN 12. The Airshow Co-ordinator will personally brief any airshow pilot who will not be operating from Tauranga.

Prescribed pursuant to the Civil Aviation Rules, Part 71 *Designation and Classification of Airspace*, under a delegated authority issued by the Director of Civil Aviation.

Operational procedures

Pilots should listen to the ATIS prior to entering the Tauranga CTR/D, and prior to taxiing for departure, to receive aerodrome information.

The circuit height for powered aircraft will be 1000ft AGL unless otherwise instructed. Aircraft so equipped must operate with landing lights and/or anti-collision lights switched on.

Grass RWY 07/25

Grass RWY 07/25 will be operative with reduced length between 0600 NZDT, FRI 27 JAN 12 and 2100 NZDT, SUN 29 JAN 12. Distance available will be 560m, thresholds are marked by white tyres. Refer attached chart.

Grass RWY 16/34 and 04/22

Grass runways 16/34 and 04/22 will be closed for take-off and landings between 1700 NZDT, THU 26 JAN 12 and 0600 NZDT, MON 30 JAN 12.

Joining procedures

Due to the anticipated high density of aircraft within and overhead the circuit area, overhead circuit joining will not be permitted. All arriving aircraft can expect to route:

- from the north-west via a Matakana One Arrival.
- from the south via a Racecourse One Arrival.
- from the east via a Papamoa One Arrival.

Refer to the AIP Vol 4 Tauranga VFR Arrival procedures.

After landing procedures

After landing, VFR aircraft will receive instructions from Tauranga Tower to clear the runway and change to GROUND frequency 123.4 MHz for parking. Aircraft participating in SPORTAVEX will be directed to parking near the western airfield boundary. Other aircraft will be directed to visitor parking on the southern portion of RWY 16/34.

A new holding position G7 and associated grass taxiway will be established to the south of RWY 07/25. Refer to the attached chart.

Subject to workload SARTIME terminations will be accepted on GROUND frequency 123.4 MHz.

Departure procedures

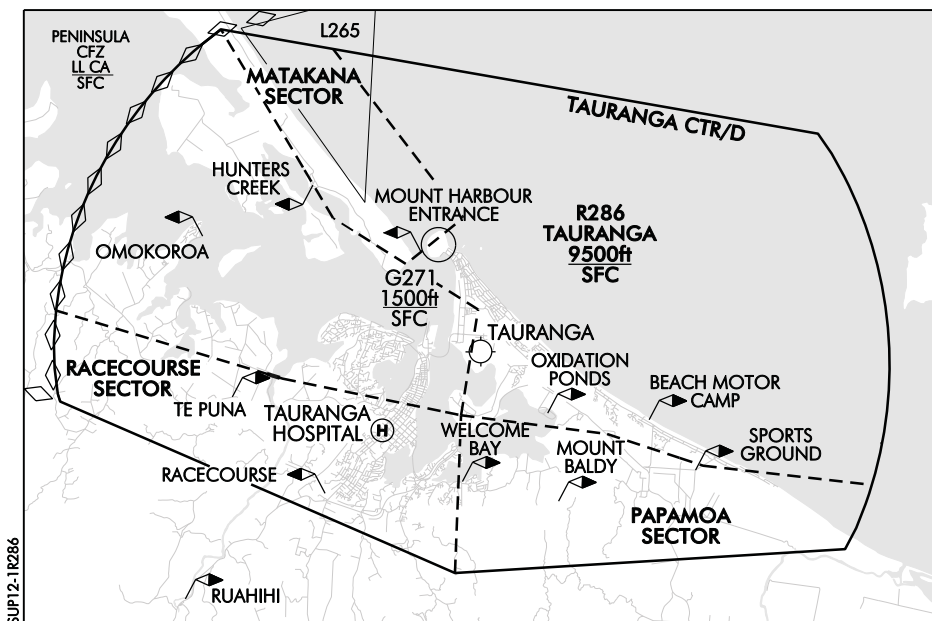
VFR aircraft must advise aircraft registration, position on the aerodrome, ATIS and required departure procedure, on the ground frequency 123.4 MHz. Pilots shall be advised to change to 118.3 MHz and taxi to the holding position for the runway in use. When first in line at the holding position report ready for departure on 118.3 MHz.

All departing aircraft can expect to route:

- to the north-west via a Matakana One Departure.
- to the south via a Racecourse One Departure.
- to the east via a Papamoa One Departure.

Refer to the AIP Vol 4 Tauranga VFR Departure procedures.

SARTIME notifications will **not** be accepted on TOWER or GROUND. Aircraft should call Christchurch Information 125.5 MHz clear of the Tauranga CTR/D with any SARTIME notifications.



Administering authority and facilities

The administering authority may suspend operations or entry approval to the restricted area at any time during NZR286 activation or within the Tauranga CTR/D at any time, if deemed necessary in the interests of safety, especially at times of emergency. IFR training is not available at any time during activation of NZR286. IFR training may be restricted at other times at the discretion of the Duty Controller.

NOTAM and pre-flight weather information will be available from the Tauranga Aero Club and Bay Flight International.

The ATIS will broadcast wind direction, QNH, runway in use, status of the GROUND frequency and any special conditions on frequency 126.6 MHz.

Control zone entry approval

Entry approval for the Tauranga CTR/D is subject to aircraft complying with the clearance provided by Tauranga Tower.

Radio procedures

Pilots should observe standard radio procedures within Tauranga CTR/D. After landing and clearing the manoeuvring area pilots of VFR aircraft should contact GROUND on 123.4 MHz for parking instructions.

NORDO operations

Pilots of arriving or departing NORDO aircraft must contact Tauranga Tower on Tel (07) 575 4144 for a briefing and ATC instructions.